

REPLACING LOCKS

To replace standard L3 locks or L50 electronic locks on your Rousseau products with smart locks (L100), please contact Customer Service.



HOW TO ORDER

Cabinets and doors: add L100 to the product code

- R Cabinet: RA30/34/35/38-WWDDHHL100, RL29/30-WWDDHHL100
- L Cabinet: LA30-WWDDHHL100
- R swing doors: RB61/62/66/67/75/76-WWHHL100, RD12/13/17/18-WWHHL100
- TekZone door: RH06-WWHHL100
- Shelving doors: SH41/43/91/93-WWHHL100, SH85-WWDDHHL100
- WM housing door: WM76-WWHHL100

NFC transponders, ask for:

- HA-L100 for a pack of five (5)



NFC transponders are not included with the lock.
They must be ordered separately (pack of 5).

Replacement lock for cabinets, ask for:

- HA48-L100 for an R cabinet with drawers or multi-drawer cabinet (RA30/RA35)
- HA52-L100 for an L cabinet with drawers (LA30)
- HA33-L100 (x2) for a multi-drawer housing for two users (RA34)
- HA48-L100 for an RL cabinet with vertical drawers (RL30)

Replacement lock for doors, ask for:

- RY50-L100 for an RB61/RB62 door
- RY51-L100 for an RB66/RB67 door
- RY52-L100 for an RB75/RB76 door
- RY56-L100 for an RD12/RD13 door
- RY57-L100 for an RD17/RD18 door
- RY63-L100 for an RH06 door manufactured before October 2018
- RY67-L100 for a hutch manufactured after October 2018
- SY50-L100 for an SH door manufactured after March 2019

For any questions, please contact your local distributor:

Product numbers on page 2:

R5XHG-4016, R5SEE-871826, RL-5HEG34010N, R5AEE-5868, TZ-C0825

ROUSSEAU METAL INC.

105, avenue de Gaspé Ouest
Saint-Jean-Port-Joli (Québec)
G0R 3G0 CANADA

DISTRIBUTORS
1.800.463.4271

END USERS
1.866.463.4270

WEBSITE
rousseau.com

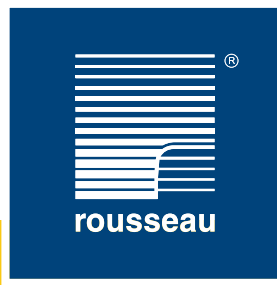
DISTRIBUTORS ACCESS
e-rousseau.com

CONFIGURATOR
MyModel-r.com

EMAIL
info@rousseau.com



Printed in Canada



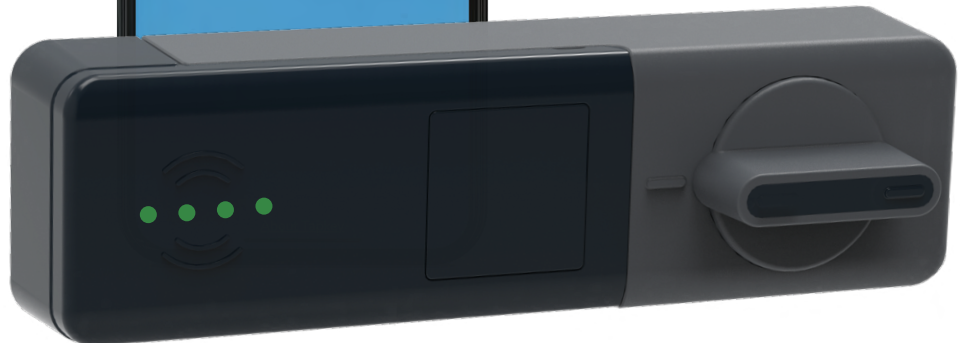
L100 SMART LOCK



DISTINCTIVE FEATURES

- Handy unlocking via a transponder or smartphone
- Easy lock and access rights management via a mobile app or the web
- Detailed access history logs for administrators
- Protection against dust and water sprays (certified IP53)
- Long-life batteries and easy to replace

AN INNOVATIVE DIGITAL ACCESS
MANAGEMENT SOLUTION



L100 SMART LOCK

COMPATIBLE WITH ROUSSEAU'S PRODUCT LINES

WATCH THE PRESENTATION VIDEO

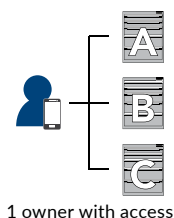


Forget keys and hard-to-remember codes. The L100 lock uses NFC technology and Bluetooth to provide you with a truly smart lock. You can simply approach an NFC transponder or use the app on your phone to instantly unlock your unit.

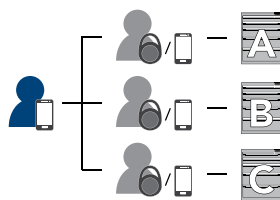
QUICK, PRACTICAL AND SECURE

The lock is compatible with most cabinets and doors manufactured by Rousseau. The L100 also saves access history so you can keep track of activity. You can view the access logs in the app or on the online portal.

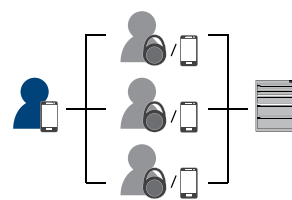
MULTIPLE WAYS TO MANAGE ACCESS



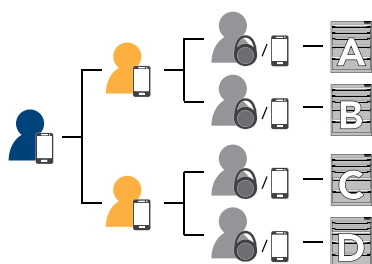
1 owner with access



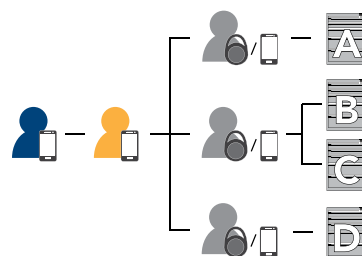
1 owner, 3 users with 3 different access rights



1 owner, 3 users with 1 shared access right



1 owner, 2 administrators each with 2 users and different access rights

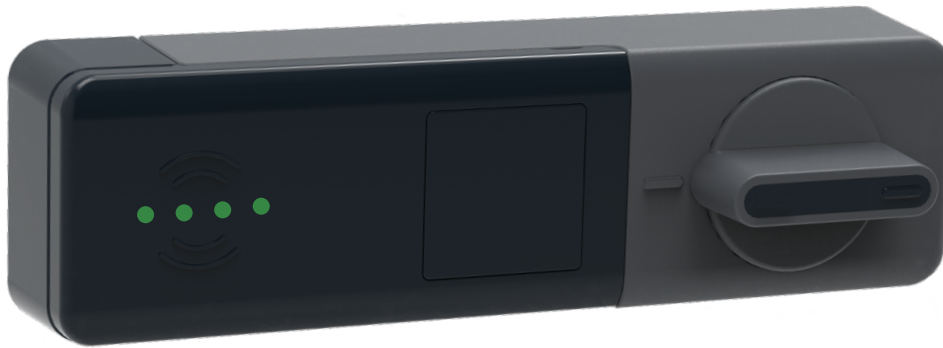


1 owner, 1 administrator, 3 users with 3 different access rights

EASY TO USE,
PRACTICAL AND SECURE

FEATURES AND OPERATION

WATCH THE TUTORIAL VIDEO



LOCK FOR CABINET AND DOOR

Locks all drawers in R Heavy-Duty Cabinets and L Compact Cabinets, swing doors on R Heavy-Duty Cabinets and L Compact Cabinets, Spider® Shelving doors and flipper doors.

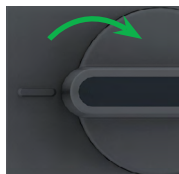
LOCKING

To lock, turn the knob to its original position.



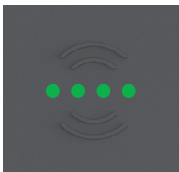
UNLOCKING

To unlock, turn the knob clockwise.



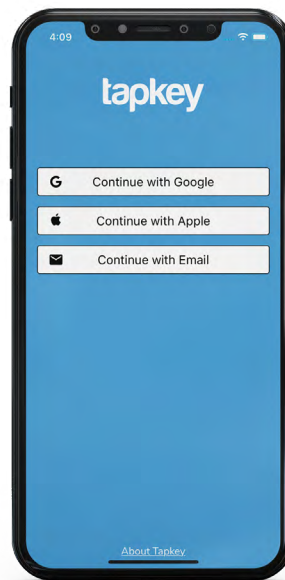
LED INDICATOR LIGHTS

The LED lights show the battery life remaining, lock state, (locked/unlocked), errors (if applicable), and more.



BATTERIES

- LED lights show current battery life.
- Lock is shipped with two AAA batteries.
- Battery life varies depending on the type of batteries used (lithium batteries recommended).
- Batteries can be easily replaced without unmounting the lock.



SMARTPHONE AND TAPKEY APP

A smartphone is required for activating the lock and managing access rights.

The TAPKEY app allows users to unlock the lock. The lock owner can also use it to add users and send opening permissions (access rights) to other users (smartphones or NFC transponders).

- Five (5) free users
- Option to add users (\$)
- App available on iOS 11 and later versions and on Android 5.1 and later versions

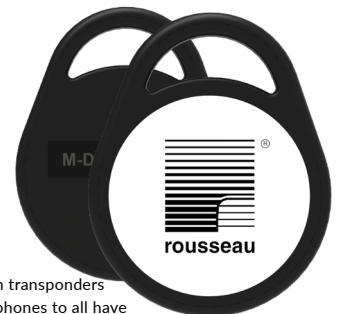


NFC TRANSPONDERS

The NFC transponder is an ideal alternative to smartphone access.

It is a physical object, doesn't need batteries and can be easily added to a key ring. In addition, the very short range of NFC transponders means they are very secure.

- Only Rousseau transponders are recommended for use with the L100 lock
- Also allows users with transponders and users with smartphones to all have access to the same lock



NFC transponders are not included with the lock. They must be ordered separately (pack of 5).